

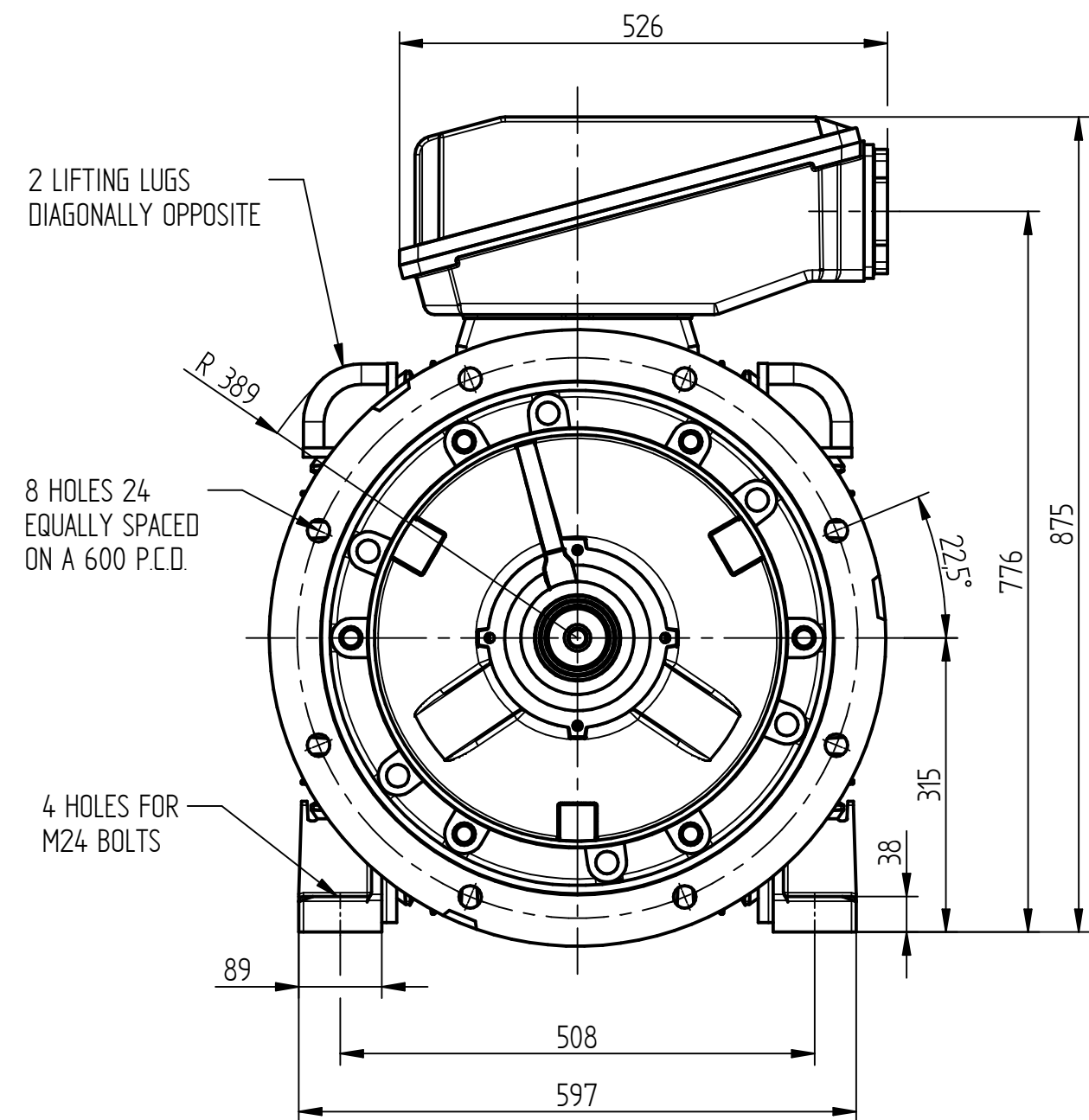
#### TERMINAL BOX POSITION:

- CAN BE ARRANGED AT EITHER 9, 12 OR 3 O'CLOCK.
- STANDARD TERMINAL BOX POSITION IS 12 O'CLOCK AS SHOWN.

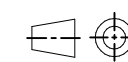
#### CONDUIT ENTRIES:

- TERMINAL BOX CAN BE ROTATED AT 90° INTERVALS.

ALL MOUNTING DIMENSIONS: ISO 2768-mK ACC TO EN 22768-1/2



ALL DIMENSIONS IN MILLIMETERS



FIRST ANGLE  
PROJECTION

**BROOK  
CROMPTON**

Produced by ATB Tamel S.A. a company of **ATB**  
Technology in Motion

DRG. No. **WP-DF315M B35 2P**

DRG. REF.

REVISION:

DATE:

SHEET  
SIZE

**A3**

TITLE:

**OUTLINE DIMENSION DRAWING TOTALLY ENCLOSED FAN COOLED  
WP-DF315M 2P FRAME D FLANGE AND FOOT MOUNTED MOTOR**

	NAME	DATE
DRAWN	SZ	30-05-19
CHECKED	PG	30-05-19
SCALE	1:7	